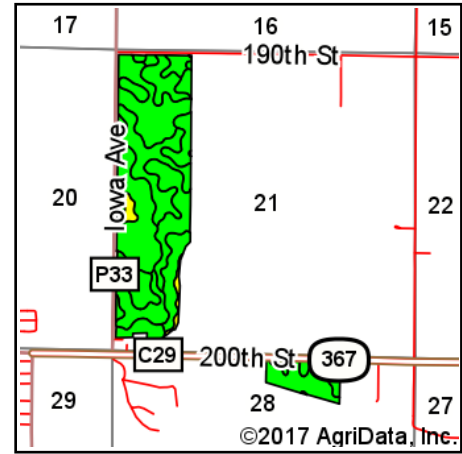
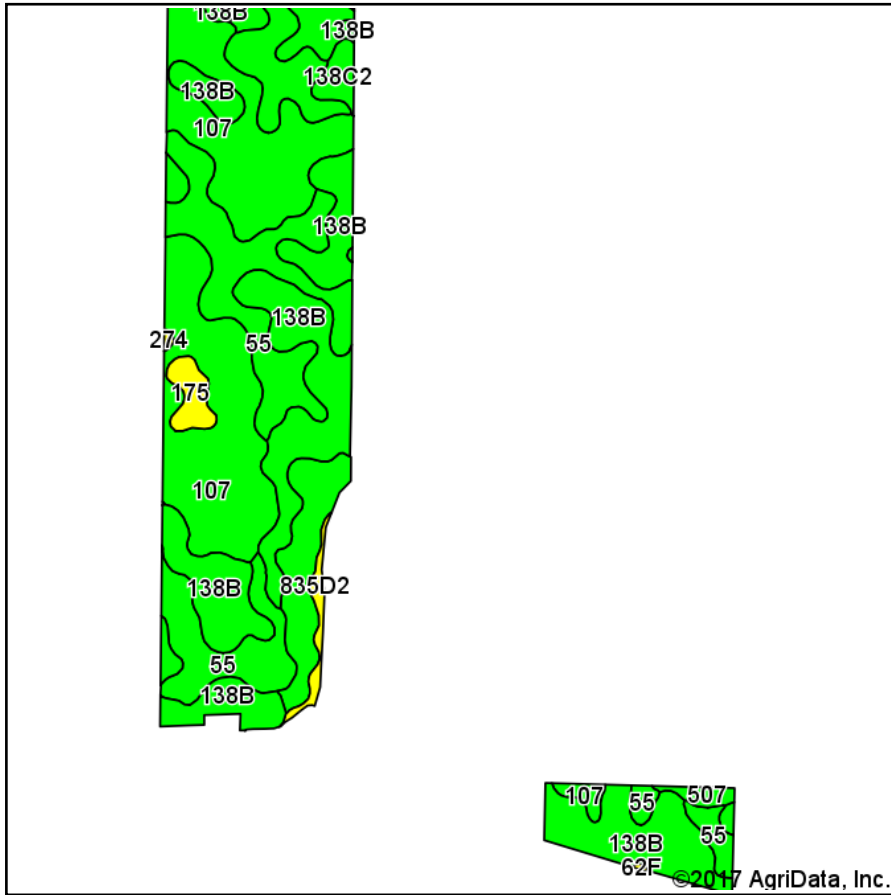


Soils Map



State: **Iowa**
 County: **Humboldt**
 Location: **21-92N-29W**
 Township: **Rutland**
 Acres: **152.26**
 Date: **2/6/2017**



Area Symbol: IA091, Soil Area Version: 22

Code	Soil Description	Acres	Percent of field	CSR2 Legend	Non-Irr Class *c	*i Corn	*i Soybeans	CSR2**	CSR	Spring wheat	Oat s
138B	Clarion loam, 2 to 6 percent slopes	54.06	35.5%		Ile	225.6	65.4	89	80		
107	Webster clay loam, 0 to 2 percent slopes	46.60	30.6%		Ilw	224	65	86	83		
55	Nicollet clay loam, 1 to 3 percent slopes	35.26	23.2%		Iw	233.6	67.7	89	88		
138C2	Clarion loam, 6 to 10 percent slopes, moderately eroded	10.94	7.2%		Ille	204.8	59.4	83	63		
175	Dickinson fine sandy loam, 0 to 2 percent slopes	2.45	1.6%		Ills	169.6	49.2	54	60		
835D2	Omsrud-Storden complex, 10 to 16 percent slopes, moderately eroded	1.60	1.1%		Ive	163.2	47.3	53	46		
507	Canisteo clay loam, 0 to 2 percent slopes	1.13	0.7%		Ilw	224	65	84	78		
274	Rolfe silt loam, 0 to 1 percent slopes	0.16	0.1%		Illw	177.6	51.5	57	53		
62F	Belview loam, 16 to 30 percent slopes	0.06	0.0%		Vle	97.6	28.3	17	12	4	7
Weighted Average						223.8	64.9	86.6	80.8	*-	*-

Area Symbol: IA091, Soil Area Version: 22

**IA has updated the CSR values for each county to CSR2.

*i Yield data provided by the ISPAID Database version 8.1 developed by IA State University.

*c: Using Capabilities Class Dominant Condition Aggregation Method

Soils data provided by USDA and NRCS.