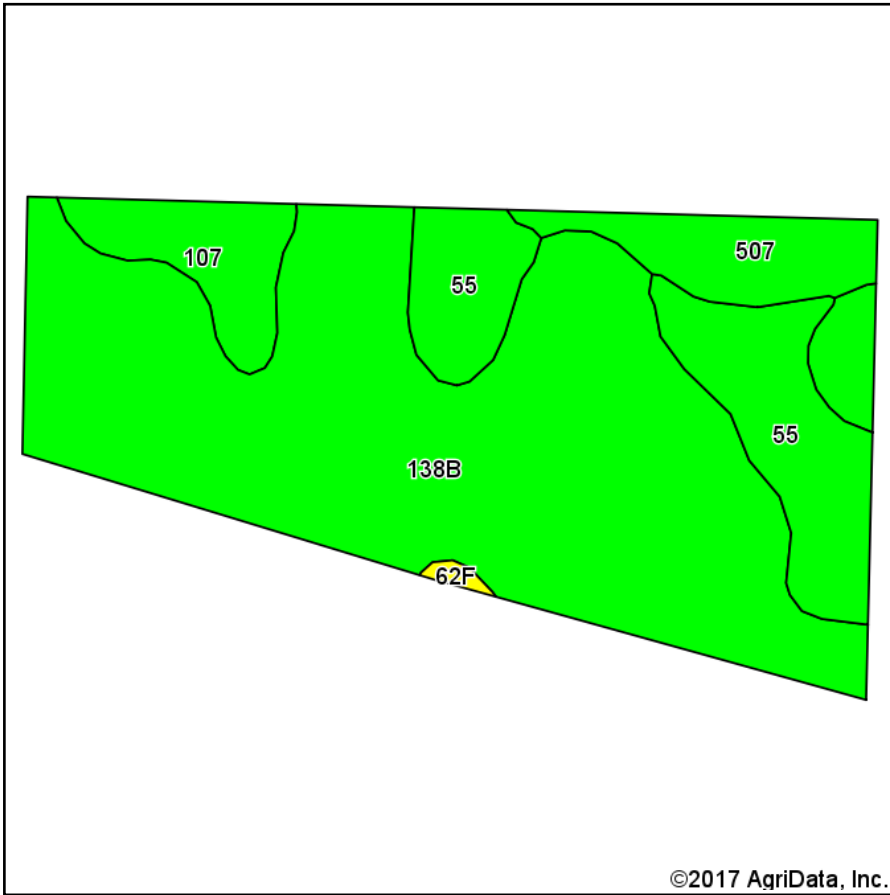
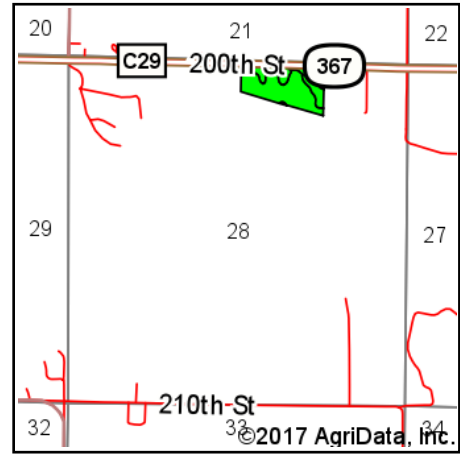


# Soils Map



Soils data provided by USDA and NRCS.

©2017 AgriData, Inc.



State: **Iowa**  
 County: **Humboldt**  
 Location: **28-92N-29W**  
 Township: **Rutland**  
 Acres: **16.5**  
 Date: **2/6/2017**



Maps Provided By:



© AgriData, Inc. 2017

www.AgrIDataInc.com



## Area Symbol: IA091, Soil Area Version: 22

Code	Soil Description	Acres	Percent of field	CSR2 Legend	Non-Irr Class *c	*i Corn	*i Soybeans	CSR2**	CSR	Spring wheat	Oat s
138B	Clarion loam, 2 to 6 percent slopes	11.49	69.6%		Ile	225.6	65.4	89	80		
55	Nicollet clay loam, 1 to 3 percent slopes	2.76	16.7%		Iw	233.6	67.7	89	88		
507	Canisteo clay loam, 0 to 2 percent slopes	1.13	6.8%		Ilw	224	65	84	78		
107	Webster clay loam, 0 to 2 percent slopes	1.06	6.4%		Ilw	224	65	86	83		
62F	Belview loam, 16 to 30 percent slopes	0.06	0.4%		Vle	97.6	28.3	17	12	4	7
<b>Weighted Average</b>						<b>226.3</b>	<b>65.6</b>	<b>88.2</b>	<b>81.1</b>		

Area Symbol: IA091, Soil Area Version: 22

\*\*IA has updated the CSR values for each county to CSR2.

\*i Yield data provided by the ISPAID Database version 8.1 developed by IA State University.

\*c: Using Capabilities Class Dominant Condition Aggregation Method

Soils data provided by USDA and NRCS.